

Championing Employability

Our challenge is to champion employability by promoting the best opportunities so that:

- Young people can access high quality careers information, advice and guidance on a range of opportunities to make informed choices
- Young people transition successfully from education and learning into sustainable employment
- Our most vulnerable learners are particularly supported to achieve positive destinations
- Young people not in education, employment or training are supported to re-engage
- There is effective employer engagement so that education providers and young people are aware of opportunities and skills needed both now, and in the future
- Residents of all ages develop and acquire new skills throughout their lives
- The local economy can grow

We will implement and monitor Warwickshire's Careers Strategy (2019/20-2024/25), secure sufficient suitable education and training provision for young people, maintain the Local Offer; setting out what services and support are available for local young people with SEND and continuously monitor numbers of young people not in education, employment or training.



Early
Years



SEND &
Inclusion



Family of
Schools



Employability

Warwickshire Education (WE) Strategy 2018-2023

'Working in partnership, celebrating
success, aiming for excellence'

Safeguarding and promoting the welfare and well-being of learners is paramount in all areas of work.

Securing the Best Start to Life

Our challenge is to foster children's love of learning from birth through early childhood and into Year 1 so that all young children achieve their potential.

Together, we will champion the Early Years Foundation Stage (EYFS) so that all children have the best start and can be ready to learn and ready for life.

Our vision is underpinned by five core values:

- All children will have the opportunity to achieve their potential
- The importance of early childhood education is understood by all
- Inclusion and access. All children are included and can access early years services
- All children will receive a good or better early childhood education
- Children and experience responsive and joined up services

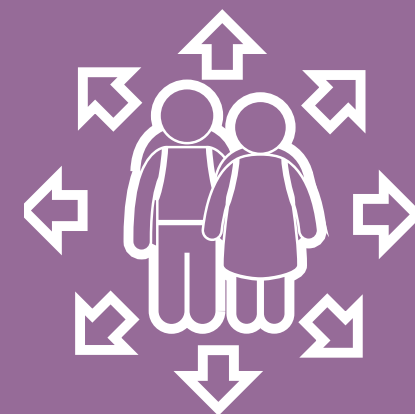


Supporting Inclusion for Learners with Special Educational Needs and Disabilities (SEND) Including Vulnerable Groups

In Warwickshire, all children and young people have the right to lead a fulfilling life and be part of their community. Our challenge is to provide an inclusive education for all children and young people within Warwickshire with a particular focus on vulnerable groups:

- SEND
- Learners missing education
- Disadvantaged learners
- Children who are looked after and care leavers
- Learners with social, emotional and mental health needs

The aim will be to turn high aspirations for all learners into a reality. We will work with partners including parents/carers, children and young people, education settings from early years to post 16 and employers to ensure our learners fulfill their potential and that their individual needs are met. We will work to narrow the gap between the achievement of all learners and their peers.



Celebrating Warwickshire's Family of Schools

Our challenge is for all learners to enjoy a high-quality learning experience through a broad, empowering and creative curriculum.

We will celebrate Warwickshire's Family of Schools, coordinate school improvement and will organise support for schools facing difficulties.

WCC will, on an annual basis:

- Anticipate growth in demand for places, maximising use of capital funding in local areas
- Efficiently administer school admissions and home to school transport
- Continue to support governors in their vital role

The Warwickshire Challenge Board will oversee the development of a sustainable self-improving education system which offers peer support and curriculum development opportunities for Warwickshire's family of schools to ensure that every child and young person receives a place at a school which offers a high-quality education

